

2011 Class C & D Women's Slowpitch ASA Northern National Championships

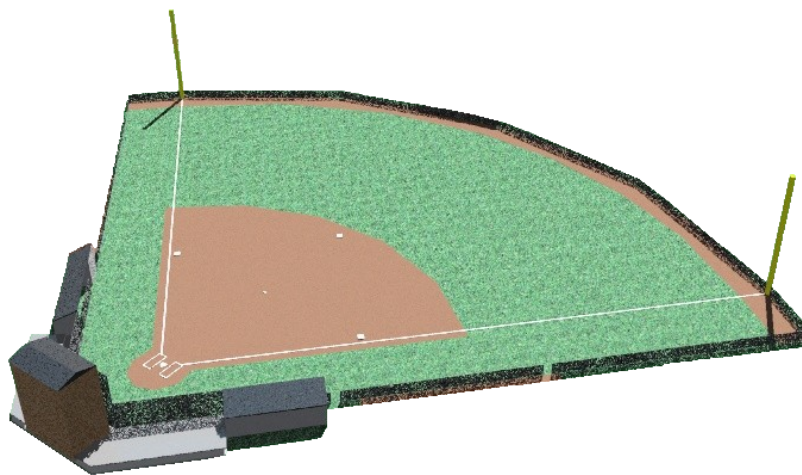


**Caswell Park - North Mankato, MN
September 2-5, 2011**



Contents of Team Packet

Welcome Letter	3
General Information	4
Order of Events	6
Field Locations/Map	7
Hotels/Accommodations	8
Hotel Information Form	9
Program Information Sheet	10
Attractions in North Mankato & Mankato	11



LET'S PLAY BALL!



***The Amateur Softball
Association USA Softball
is recognized by the
United State Olympic
Committee as the National
Governing Body for
Softball.***

Summer 2011

Dear Team Managers:

Congratulations! Your team has qualified as one of the top teams in the Northern Territory and has earned the right to advance to the 2011 Class C or D Women's Slowpitch Northern Nationals to be held in North Mankato, Minnesota. We have planned a great tournament and are looking forward to your arrival.

The City of North Mankato, Mankato, and the ASA of Minnesota/ Minnesota Sports Federation staff and volunteers look forward to hosting you and your team during this exciting weekend of softball!

Enclosed is a packet of information concerning tournament procedures which you will need to follow.

Please read all the enclosed materials and instructions carefully so the tournament can run efficiently. Please check with your commissioner to assure your ASA ♦ USA Softball official tournament roster is received by us. If time does not permit, you may hand carry your official ASA roster and pick-up player form, but the official ASA entry form from your state/ metro commissioner and \$375 entry fee (made payable to MSF) must be received by Tuesday, August 23, 2011.

We anticipate a great tournament and look forward to some exciting softball. Once again, congratulations and good luck to your team in the tournament.

See you on the diamonds!

Steve

Steve Ketter, Tournament Director
Assistant State Commissioner
ASA of Minnesota

Perry

Perry Coonce
State Commissioner
ASA of Minnesota

ASA of Minnesota • P.O. Box 368 • Big Lake, MN 55309
(763) 263-9993 • Fax (763) 263-5657



General Information



Site:	Caswell Park 1875 Howard Dr. North Mankato, MN 56003
Dates:	September 2-5, 2011
Tournament Website:	msf1.org
Tournament Director:	Steve Ketter, steve@msf1.org, 952-405-6936
Tournament Manager:	Lee Cohan
ASA Representative:	Dave Long
Tournament Umpire-in-Chief:	Gary Kottke
Entry Fee:	\$375 (payable to MSF) — send entry form and fee to: Women's Slowpitch Northern Nationals P.O. Box 368 Big Lake, MN 55309
Entry Deadline:	Tuesday, August 23, 2011
Rosters:	Official ASA ♦ USA Softball Tournament Roster and pick-up player forms may be mailed or hand delivered and submitted during team check-in.
Eligibility:	All players must have a valid driver's license or state I.D. in their possession. If driver's license has been revoked, the revocation slip, birth certificate, and a pre-approved alternative photo I.D. must be presented. Per ASA ♦ USA rules, players without valid driver's license or alternative methods cited herein will not be allowed to participate.
Playing Rules:	All ASA ♦ USA playing rules apply.
General Tournament Regulations:	<ol style="list-style-type: none">1. Team managers must have full control of their players at all times including on and off the field.2. In case of a perceived misapplication of a playing rule, the team manager may consult game officials. Others are to be kept out of the discussions. Judgment plays may not be protested.3. Team managers are to report any unsportsmanlike or derogatory acts by players or spectators to the tournament director.4. Any report by hotel or motel management of destruction of property or abuse of hotel or motel property and/or guests will result in suspension/disqualification or other appropriate action.5. Players/managers ejected from a game for unsportsmanlike act likely will be disqualified from tournament play. A hearing will be held.



General Information (continued)



Game Time:	Game time is forfeit time.		
Official Schedule:	Following completion of the first round of the tournament play the official tournament schedule becomes the bracket posted at the tournament headquarters. Managers/players must check it after each game played.		
Protests:	Please study rules, especially pitching, equipment, appeals and protest procedures. All protests will be handled by the tournament committee and the decision of the committee will be final.		
Structure:	Double Elimination or Three game guarantee		
Bat Check:	Bats must be presented for inspection at the headquarters umpires tent one-half hour prior to a team's first scheduled game.		
Awards:	Trophies will be awarded in accordance with Article 607 03 of the ASA Code.		
Official Ball:	STARR Red .44 COR/375 Comp		
Delays:	All games must be completed. In the event of rain or any cause which interrupts a game, the game must be resumed at the exact point where it was stopped. It is the manager's responsibility to report to the tournament headquarters for rescheduling information. Please see "Official Order of Finish" in the ASA Code for procedures to determine standings in case games cannot be finished.		
Uniforms:	All players must comply with the ASA♦USA uniform rules according to Rule 3, Section 6 of the ASA Rulebook.		
Team Dugouts:	Team on top of bracket uses first base dugout. Team on bottom of bracket uses third base dugout. In the event a team plays back to back on the same field, they are not required to change dugouts.		
Coin Toss:	Just prior to each game, a coin toss shall determine the home and visiting team.		
Official Lineups:	Team managers must report to the tournament headquarters a minimum of 20 minutes prior to the start of each game to receive an official line-up sheet.		
Dugout Limit:	Personnel allowed: rostered players, two managers, one scorer and bat person.		
Infield Practice:	Infield practice will not be allowed before games. Teams may warm up on grass while infield is being prepared.		
Pets:	No pets allowed at Caswell Park.		
Player Passes:	Rostered players only and team managers only (maximum of 20 players). All participants must be in team uniform to gain admission to the complex. Participants not in uniform will be required to pay the daily admission price.		
Admission:		<u>Adults</u>	<u>Students</u>
	Daily:	\$8.00	\$6.00
			<u>Seniors</u>
			\$6.00
	There will be no charge for parking. Children 9 and under are free.		
	Price of admission includes Souvenir Tournament Program while supplies last.		
Souvenirs:	A wide variety of reasonably priced souvenirs will be available.		
Concessions:	A wide variety of concessions will be available. COOLERS MAY NOT BE BROUGHT INTO THE COMPLEX. Please support the concessions stand.		
Alcoholic Beverages:	The legal drinking age in Minnesota is 21 years old. NO ALCHOLIC BEVERAGES MAY BE BROUGHT INTO THE PARK OR PARKINGS LOTS.		



Order of Events



Tuesday, August 23

Official ASA tournament entry form and fee due

**Friday, September 2
4:00 PM**

Team Check-in starts at Fire Station Community Room
1825 Howard Dr (next to Caswell Park)

**Friday, September 2
6:30 PM**

Managers Meeting at Fire Station Community Room

**Saturday, September 3
8:00 AM**

Games begin

**Saturday, September 3
11:30 AM**

Opening Ceremonies at Caswell Park

**Saturday, September 3
8:30-11:00PM**

Players' Party at Caswell Park

Sunday, September 4

Games continue

Monday, September 5

Games continue if necessary

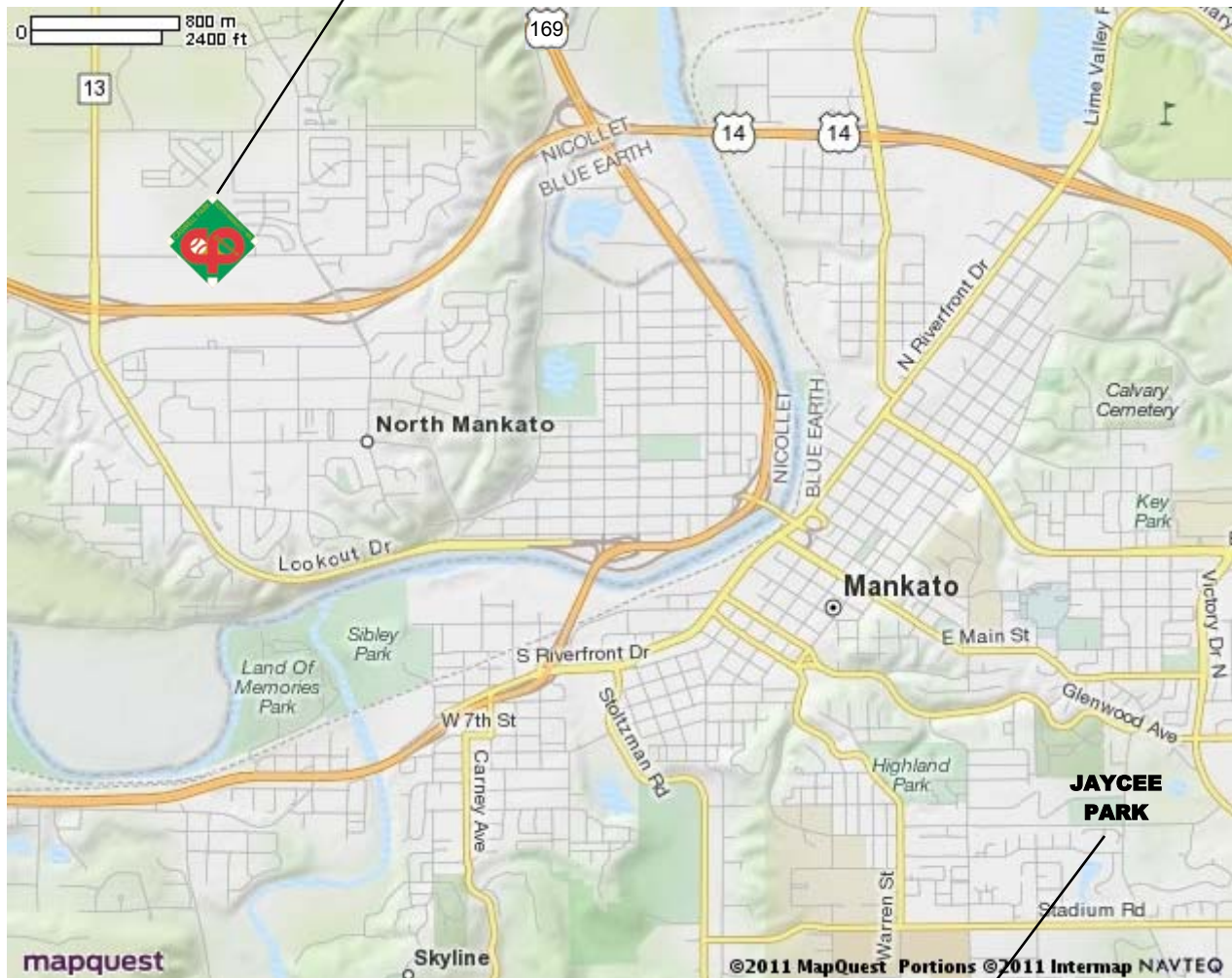
Closing Awards Ceremony immediately follows Championship Game



Field Locations



Caswell Park - 6 fields
1875 Howard Dr
North Mankato, MN 56003



Jaycee Park - 3 fields
147 Jaycee Ct
Mankato, MN 56001



Hotels/Accommodations



Tournament Hotel Room Pricing Women's Slowpitch Northern Nationals

Best Western, 1111 Range St, North Mankato
www.bwmankato.com (507) 625-9333
aherz@hickorytech.net

Friday, September 2	75 rooms @ \$99.99
Saturday, September 3	75 rooms @ \$99.99
Sunday, September 4	75 rooms @ \$99.99

Super 8, Jct of Hwy 169 N & Hwy 14
www.super8.com (507) 387-0600
super8mo@hickorytech.net

Friday, September 2	30 rooms @ \$78.00
Saturday, September 3	30 rooms @ \$78.00
Sunday, September 4	30 rooms @ \$78.00

Days Inn, 1285 Range St
www.daysinn.com (507) 387-3332

Friday, September 2	20 rooms @ \$75.00
Saturday, September 3	20 rooms @ \$75.00
Sunday, September 4	20 rooms @ \$70.00

Mankato City Center Hotel, 101 E Main St
www.mankatomnhotel.com (507) 345-1234

Friday, September 2	35 rooms @ \$102.00
Saturday, September 3	35 rooms @ \$102.00
Sunday, September 4	35 rooms @ \$102.00

Holiday Inn Express
www.hiexpress.com/mankatomn (507) 388-1880

Friday, September 2	24 rooms @ \$109.99
Saturday, September 3	24 rooms @ \$109.99
Sunday, September 4	24 rooms @ \$109.99

Country Inn & Suites, 1900 Premier Dr
www.countryinns.com/mankatomn (507) 388-8555

Friday, September 2	20 rooms @ \$114.00
Saturday, September 3	20 rooms @ \$99.99
Sunday, September 4	20 rooms @ \$99.99

Microtel Inn & Suites, 200 St. Andrews Dr
www.microtelinn.com.mankatomn (507) 388-2818

Friday, September 2	25 rooms @ \$71.00 or 81.99
Saturday, September 3	25 rooms @ \$71.00 or 81.99
Sunday, September 4	25 rooms @ \$71.00 or 81.99

Grandstay Residential Suites, 1000 Raintree Rd
www.grandstay.net (507) 388-8688

Friday, September 2	40 rooms @ \$99.90
Saturday, September 3	40 rooms @ \$99.90
Sunday, September 4	40 rooms @ \$99.90

Hilton Garden Inn, 20 Civic Center Plaza
www.mankatodowntown.stayhgi.com (507) 344-1111

Friday, September 2	30 rooms @ \$99.00
Saturday, September 3	30 rooms @ \$94.00
Sunday, September 4	30 rooms @ \$90.00

For questions concerning hotel information or pricing, please contact Lynette Peterson at (507) 625-4141 or lynettep@northmankato.com.



Minnesota Sports Federation

Hotel Information



This form must be filled out to complete registration!
Accurate information will help us negotiate better rates in the future.

Tournament _____	Date _____
Team Name _____	
Manager's Name _____	
Cell Phone: (in case of emergency or cancellation) _____	

***Please fill out complete information for each room reservation. If you have not checked in, be sure to mention MSF when checking in. PLEASE PRINT CLEARLY!

Hotel:_____ **City:**_____

	<u>Name Reservation is under</u>	<u>Room Number</u>	<u># of Rooms</u>	<u># of Nights</u>
1.	_____	_____	_____	_____
2.	_____	_____	_____	_____
3.	_____	_____	_____	_____
4.	_____	_____	_____	_____
5.	_____	_____	_____	_____
6.	_____	_____	_____	_____
7.	_____	_____	_____	_____
8.	_____	_____	_____	_____
9.	_____	_____	_____	_____
10.	_____	_____	_____	_____



Program Information



In order to produce the tournament program, we need your team's roster and photo. Please use the form below to complete your team's roster information. Email your team photo to steve@msf1.org. **THIS IS NOT YOUR OFFICIAL ROSTER.**

UNOFFICIAL ROSTER

NAME	UNIFORM #	POSITION



Attractions



- **Golf Courses**

North Links - Cty Rd 6, off Hwy 14 - (507) 947-3355

18 hole, par 72 - Driving range - 2 hole practice course - Pro Shop - Carts available

Terrace View Golf Course - (507) 625-7665

9 hole, par 36 - 9 hole, par 27 executive course - Driving range - Carts

Minneopa Golf Club - 410 Pintail Street - (507) 625-5777

9 hole, par 33 - Putting green - Pro Shop - Carts available

- **Movie Theatres**

Cinemark Movies 8 - River Hills Mall - (507) 625-3553

Cine 6 Theatre - 220 Stadium Road - (507) 625-1763 - featuring stadium seating

Maverick 4 - 12 Civic Center Plaza - (507) 344-4444 - discount tickets

- **Bowling Alleys & Recreation**

Jerry Dutler's - 1247 Range St N, North Mankato - (507) 387-3439

WOW! Zone - 2030 Adams St, Mankato - (507) 625-BOWL

- **Swimming**

Spring Lake Park - (507) 388-1767 - Sand-bottom pool with diving well

Tourtellotte Park - (507) 387-7946 - wading, main and diving pools

Hiniker Pond - Sand-bottom gravel pit - no lifeguards or admission

- **River Hills Mall**

More than 100 specialty stores, food court, carousel and theatres. The 700,000 square foot mall has something for everyone. The mall is anchored by Target, Sears, Herbergers, JC Penny and Scheel's Sports.

- **Grand Champions**

Hwy 22 - (507) 386-0001

Two 18 hole miniature golf courses, 6 batting cages, driving range

- **Morgan Creek Vineyards**

23707 478th Avenue off Hwy 14 West, New Ulm - (507) 947-3547

Minnesota's only underground winery offers seasonal events including tours, tastings, and picnic lunches.